

OCTOBER 2008

CHRS *Signal*

California Historical Radio Society



A SUNDAY MORNING AT KRE

CHRS president Steve Kushman reflects on how member efforts combine to spell success

page 4



A SPECIAL PIECE OF REAL ESTATE

As our national focus turns to property values and economic uncertainty, it is a comfort to think about the enduring value of our KRE property. We are privileged to be able to preserve and improve a building that can be truly viewed as a community asset. The following pages will show some of the selfless efforts of our members. Join us at our next work day if you can. We have a lot of fun and we'd love to see you!

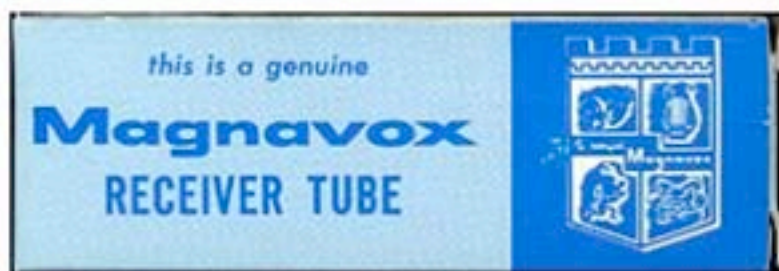


Paul Shinn brings home the *beacon* *page 7*

GOINGS ON AT KRE



Truck full of old radios donated to CHRS by Tom Jensen



This little tree can hardly wait for Jerry Cantou to dig it a new home on the KRE grounds



Brent Hokanson gets no argument from tree stumps with this formidable piece of hardware

RADIO REPAIR CLINIC

CHRS members were given another opportunity to bring in their radio gear for expert repair advice from Art Lebermann, Scott Robinson, John Staples and Dennis Monticelli.



Members bring their radio gear to the CHRS shop at the KRE building for a troubleshooting session



Radio repair is a lot like detective work



Art Lebermann helps Lew Doty with his radio while Rod Wentler looks on



Tiny-mite
RADIO

RECEIVES LOCAL STATIONS BY SIMPLE CONNECTIONS

Fits in your Hand!

NO TUBES
NO BATTERIES
NO ELECTRIC PLUG-INS

Try it!
Buy it!

Only \$3.99

COMPLETE PORTABLE CARBON
Ready to Play

Have You Heard?

About
Universal Radio & TV Repair
8307 S. Racine Ave.
They Sell Phonograph Records and
Repair Electrical Appliances
ST. 3-6128
Open Evenings

A Sunday morning at KRE

by Steve Kushman

On the morning of Sunday Sept. 28th, I arrived early at KRE to open up for our regular fourth Sunday of the month work / fun day. It was quiet. I always enjoy walking through the building, turning on the lights and seeing the wonderful artifacts that are the heart of the CHRS Collection. In our gallery, part of Studio 'A', that houses our R40 Electrola, Scott Allwave 15, Scott 800B among other gems, I noticed that our Marantz 2500 was back from being repaired. I know, it's solid state, but it's a monster. 250 watts per channel with a built in fan and scope. I powered it up and the room was filled with great sounding music from the FM tuner. It's playing through our vintage Electro-Voice KD4 Regency speakers. Later, we hooked up one of our Technics SP-15 turntables with the SME tone arm. We found a pristine Telarc copy of Mussorgsky's Pictures at an Exhibition and it sounded superb through our system. The best part was that there was no one there yelling, "turn down that stereo!"



Marantz 2500 amplifier/tuner with Technics SP-15 turntable

But wait, there's more. CHRS was given a 1/4" audio tape on a 12" reel in a white box with the following in red grease pencil on the cover, "Giants win the pennant, 1962, Russ Hodges, Lon Simmons".

So, I went into our Museum Store / audio transfer service and fired up our vintage Gates Dualux audio console, threaded the tape on our Ampex 354 tape deck and listened to a great program hosted by Russ and Lon with all the hi-lites of the Giants' 1962 Pennant

winning season, recorded in the '60s. It brought back lots of memories of that year including a black and white TV on a metal cart being rolled into our 6th grade classroom at Francis Scott Key School to watch that ill fated World Series against the mighty Yankees.



Our Ampex 354 audio tape deck

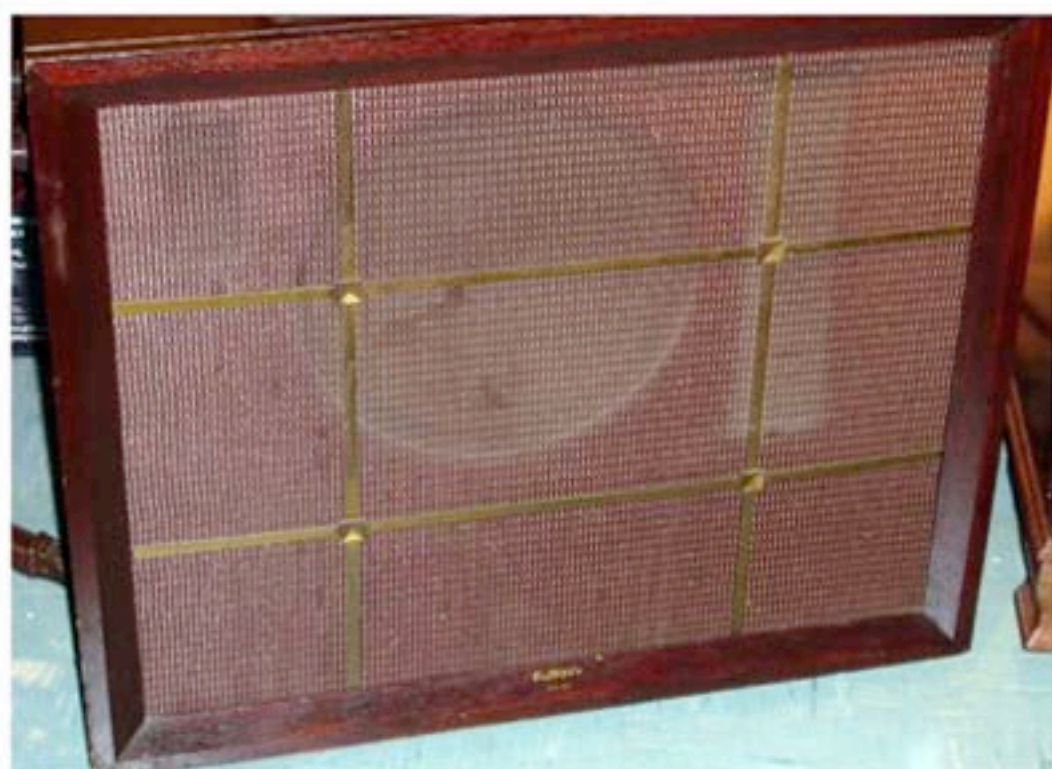
What's the point of all this. Actually a couple of things. First when I joined CHRS way back in 1988, basically all we did was have swap meets in parking lots. We have come a long way since then. It is so cool to walk into our building and see beautiful examples of vintage radio receivers on display and have vintage audio equipment working in almost every part of the building. All part of the CHRS Collection. You have

to see, and hear this place.

Second, there are so many people who, without knowing it, gave your President a most pleasurable audio experience that quiet Sunday morning in Berkeley. To begin, our Marantz 2500 receiver, along with our Scott 800B and Allwave 15 was donated by Earl Ahern. The Marantz was repaired by John Staples. The Technics SP-15 was donated by

KLIV and restored for us by Bill Smith with a little troubleshooting by Scott Robinson.

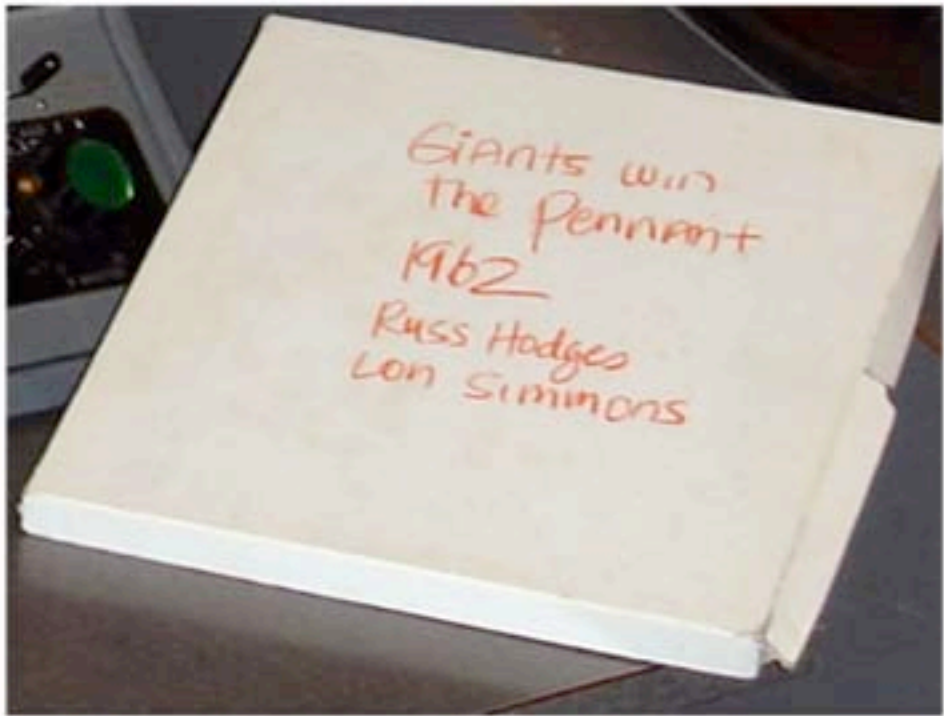
Our set of Electro-Voice KD4 Regencys was donated by former CHRS member Ed Jesser and picked up and delivered for us by Jerry Cantou. The pristine record album came from the Bill Reynolds record collection that was donated to CHRS by his children Jennifer and Bill. Our 1950s Gates Du-lux studio audio console, the "Hi Watter", on the proper



One of our Electro-Voice KD4 Regency loudspeakers



Our 1950s Gates Dualux audio console



A piece of radio history



Gates pedestal was donated by Stephen Barncard and lovingly and completely restored by John Staples. Our Ampex 354 tape deck came with our building. It was strewn on the floor in a room full of junk. This deck is the one that appears behind the right shoulder of Wolfman Jack in the famous photo taken in our control room in 1972. CHRS member Joe Selkregg refurbished and rebuilt this deck and 2 other Ampex 350s for us.

And the tape? Donated to CHRS by former 49er and current Sportscaster Mike Shumann of Ch 7, KGO-TV. CHRS Volunteers and donations are the engines that drive our Vintage Radio Society. So, Thank You to all our donors and volunteers. Keep up the good work.



W6CF/B

Paul Shinn sets up W6CF beacon

FCC rules allow licensed amateur radio operators to operate unattended beacon stations on the 10 meter (28 MHz.) and higher frequency bands. There are many 10 meter beacons on the air and they are useful to DX enthusiasts, shortwave listeners, and new hams on this band, which is incredibly popular during sunspot peaks. 10 meter beacons serve the radio community by indicating in real time when the band is 'open' for DX communications, and into which areas of the globe.



Paul Shinn in the W6CF ham shack

10 meter beacons are coordinated through the IARU beacon coordinators. Coordination of beacon frequency and power level is suggested to relieve interference within the beacon bands to other beacons, and to make the beacon resources more valuable to the amateur and SWL community. The IARU region 2 (which covers the USA) coordinator maintains a list of all

beacons and keeps it current with frequent updates. You can find the list online at <http://userpages.troycable.net/~wj5o/bcn.htm>. Most 10m beacons operate with power levels between 1 and 10 watts and modest antennas.

As many know, the 10m band has incredible propagation characteristics. When the band is 'open', reliable communications all over the entire globe are possible with very low power levels.

I operate 4 beacons on the 10m band; the first went on the air in early 2001. I really enjoy exchanging QSL cards, but I don't have time to personally sit in front of a radio making contacts. The beacons do all the 'calling CQ' for me, and they do it 24 hours a day, which is humanly impossible. All I have to do is receive and respond to the reception reports.

The CHRS amateur radio station, W6CF is a living memorial to James Maxwell. It is a valuable resource that is a way for the CHRS to interface directly with the

public, but it is on the air very infrequently. My desire to make the CHRS and our incredible offerings more visible to the public drove me to contact the IARU region 2 coordinator on behalf of the CHRS. I requested a frequency to operate a 10m beacon to honor James Maxwell and his enormous contribution to amateur radio. Using the beacon callsign W6CF/B, and the assigned frequency of 28.2045 MHz. the CHRS' 10m beacon will be on the air 24/7 as a perpetual tribute to Jim, and an on-air ambassador to the CHRS.

Using a broken 10m mobile radio found in the donated equipment shelves, a PIC keyer built by me, and some purchased items, I was able to piece together all we need for the beacon station. We received the OK from from KVTO chief engineer Paul Marks for placement of the antenna on the CHRS headquarters building for our beacon on November 15. The W6CF/B beacon for CHRS will be on the air continuously. Listen for it!

-Paul Shinn



What's all this "beacon" stuff. I'm trying to tune in *Ma Perkins*



CHRS news

Donations

CHRS would like to thank the following people for their generous donations

Tom Jensen for the radio collection of his father, **Charles William Jensen**. Included in this collection is an early De Forest radio receiver

John Wentzel for a chair side radio and a portable RCA transcription player

Butch McDonald for an electric air compressor (very useful) and a new gas string trimmer

Mike Shumann for the 1962 audio tape of "Giants win the Pennant" with Russ Hodges and Lon Simmons

Jim Chanin for his cash donation of one thousand dollars

We extend a special thanks to CHRS Life Member Jim Chanin for this generous donation to our Building Restoration and Museum fund. With this donation Jim has acknowledged the importance of our work. Jim's name will be added to the donor plaque in the KRE lobby. With donations such as this, CHRS will be able to complete our vision for a West Coast center devoted to radio and radio history. Thanks again Jim!

SILENT KEYS

WE ARE SAD TO REPORT THE PASSING OF GENE ESTAMPA, A CHRS LIFE MEMBER. OUR SINCERE CONDOLENCES TO HIS FAMILY. GENE WAS A CONSTANT ATTENDEE AT OUR EVENTS AND WILL BE MISSED.



Signing off...

Well, that wraps up another CHRS Signal. As you may have noticed, this issue has two articles contributed by members. How about you? Any stories and pictures you can share would just add to the fun. I'd love to hear from you.

Rod Wentler rodwentler@yahoo.com