



Live! Auction 2013

[California Historical Radio Society](http://www.chrsociety.org)



2. Tandberg / Portable 41
1970; AM Broadcast, LW, SW, FM



3. General Electric / F63
1937/1938; AM Broadcast + Shortwave



4. Crosley / 11-127
1951; AM + FM; Green face with simulated green morroco leather Bakelite cabinet



5. Atwater Kent / 4700
1928; Speaker; clicks with battery test



6. American Bosch / 505
1935; AM Broadcast + Police



7. Homebrew / model?
Antenna tuner



8. Hallicrafters / SW-500
1961; AM Broadcast + Shortwave



9. RCA Victor / BP-10
1940/1941; AM Broadcast; Portable



Live! Auction 2013

[California Historical Radio Society](#)



10. RCA Victor / 1X56
1952; AM Broadcast; working, restored



11. Kennedy / 30
1925; TRF; AM Broadcast; panel with chassis only, no cabinet



12. RCA / T62
1939/1940; AM Broadcast + Shortwave



14. Northern Electric / Midge 508
1951; AM Broadcast



15. Zenith / 3000-1
1963-1971; AM/FM, LW, SW; Transoceanic; Solid-state



16. Stromberg Carlson / 1000-H
1941; AM Broadcast; Bakelite cabinet



17. Weston / 788
1943ca (WW II); Tube tester/analyzer; built for the US Navy



18. Webcor / 210-1B
1953; Reel-to-Reel; Monaural



Live! Auction 2013

[California Historical Radio Society](http://www.chrsociety.org)



19. Philco / 37-84
1936/1937; AM Broadcast; original condition



20. Philco / 40-120C
1939/1940; AM Broadcast; Working



22. Packard Bell / 35H
1936ca; AM Broadcast + Shortwave



24. Atwater Kent / 49
1928; TRF; no tubes



25. Acoustics Research / AR11
1978; Speaker pair; woofer refoamed; no grill



26. Grundig / 4040W
1953; AM Broadcast + Longwave + Shortwave + FM;
Working



28. Fada / 175 Nutrodyne
1924; TRF; no tubes



29. Atwater Kent / 85
1931; Superheterodyne; AM Broadcast



Live! Auction 2013

[California Historical Radio Society](http://www.chrsociety.org)



30. Hoffman / A300
1946; AM Broadcast



31. RCA / 100A
1927/1929; Speaker; clicks with battery test



32. Philco / 49-506 Transitone
1949; AM Broadcast; Working



34. Atwater Kent / Type E3
1928; Speaker; Clicks with battery test



36. Crosley / 58 Buddy Boy
1931; TRF; Repwood cabinet



38. RCA Victor / 9TX1 "Little Nipper"
1938; AM Broadcast



40. PYE / P76
1953; AM Broadcast + Longwave + Shortwave



41. Majestic / 71
1928; TRF; AM Broadcast



Live! Auction 2013

[California Historical Radio Society](http://www.chrsociety.com)

5



42. Motorola / 5T1
1937/1938; AM Broadcast + Shortwave



44. Fairbanks Morse / 5B
1938ca; AM Broadcast + Police



46. Philco / 54
1934/1935; AM Broadcast



48. Grebe / MU1 Syncrophase
1925; TRF; with chain; no tubes



50. Philco / 60
1934ca; AM Broadcast



52. Emerson / 652
1950/1952; AM Broadcast



54. Zenith / 6S128
Needs work



56. Hallicrafters / SX-42
1946-1948; AM-CW-FM Receiver; Fully covers 0.540
-110MHz in 5 bands (80,40,20,10,6 meters)

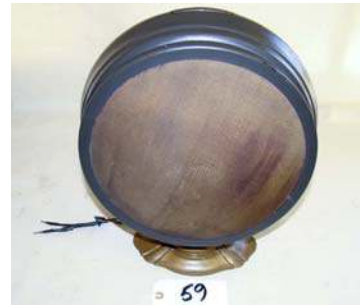


Live! Auction 2013

[California Historical Radio Society](#)



58. Capehart / 24N4 Hepplewhite?
1946/1948; AM/FM; Chassis and speaker



59. Radiola / 100
1926; Speaker; clicks with battery test



60. Telefunken / Gavotte 8U
1957/1958; AM/FM/SW; Not working



61. Atwater Kent / 52
1928; TRF; AM Broadcast; Unique all-metal small console cabinet



62. Radiola / 44
1929; TRF



64. Zenith / 6V27
1936; Battery farm set converted to work on 120vac; Restored



66. Emerson / 505
1946; AM Broadcast; Portable battery + AC



67. Acoustics Research / AR11
1978; Speaker pair; woofer refoamed; no grill



Live! Auction 2013

[California Historical Radio Society](#)



68. Telechron / model?
Wall Clock; works



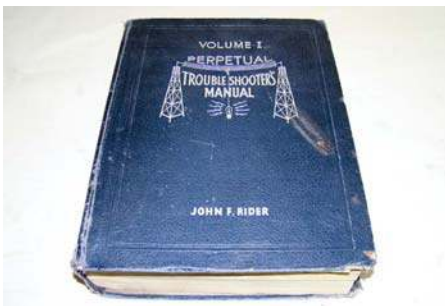
70. Homebrew / model?
1926ca; TRF; Appears complete; Has Cunningham tubes



72. Philco / 40-155
1939/1940; AM Broadcast + Shortwave; Works but not restored



74. Teleone / Speaker
1920's; driver passes battery click test



75. Riders / 23 Volume Set
Perpetual Troubleshooters Manuals



76. General Electric / 409
1952; AM/FM; Works



77. Atwater Kent / 84
1931; AM Broadcast; Superheterodyne



78. Pilot / TV37U
1948; BW Television; VHF; works



Live! Auction 2013

[California Historical Radio Society](#)



80. Hallicrafters / SX-101A
1959-1963; Shortwave only; 3.5-4, 7-7.3, 14-14.4, 21-21.5, 28-30 MHz; Needs work



82. Philco / 38-12
1937/38; AM Broadcast



84. Homebrew / model?
1920's; 3-tube Regenerative; no tubes



86. Hallicrafters / HT-32
1958/59; Transmitter; SSB/AM/CW; 80-10 meters



88. Pignose / 7-100
2003-2009; Amplifier



89. Zenith / 7D162
1936; AM/Shortwave + Police



90. Sylvatone / model?
78rpm phonograph with crank



92. Zenith / 288
1933; AM Broadcast + Shortwave



Live! Auction 2013

[California Historical Radio Society](#)



94. Brunswick / 5NO
1928/1929; AM Broadcast; Superheterodyne
(Brunswick used Radiola 60 chassis)



96. Zenith / 7S363
1938; AM, SW, Police; working



98. American Bosch / 5A
1931; TRF; AM Broadcast



99. Acoustics Research / AR11
1978; Speaker pair; woofer refoamed; no grill



100. Philco / 42-355
1941/1942; AM Broadcast + Shortwave



102. King / 81
1927; TRF; AM Broadcast; Has original sales tag; Has tubes



104. Hallicrafters / SX-28A
1944/1945; AM/CW; 0.55-43 MHz



106. Sentinel / 118BCT
1939; AM Broadcast; Farm battery set



Live! Auction 2013

[California Historical Radio Society](http://www.chrsociety.com)



108. Setchell Carlson / 427
1947; AM Broadcast; Bakelite with finished back; plays well

110. Philco / 40-180
1939/1940; AM + Shortwave; console



112. Browning-Drake / model?
1920's; Regenerative; kit assembled; no tubes

116. RCA Victor / 56X
1946; AM Broadcast, Bakelite



120. Hallicrafters / S-86
1954-1957; Broadcast + shortwave receiver

122. Victrola / VV4-4 Granada
1925-26; 78 rpm acoustic phonograph



124. US Army Signal Corps / BC-348-Q
WWII era; 5 bands covering 1.5 - 18.0 MHz;

126. Silvertone / 8102A
1949; console ; AM Broadcast; 78 rpm phone with integrated wire recorder/player



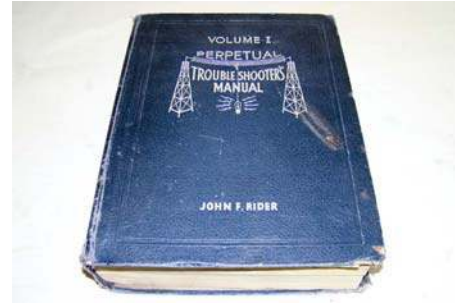
Live! Auction 2013

[California Historical Radio Society](#)

11



140. EH Scott / 800b
1946/47; AM/FM/Shortwave; 3 pieces: Tuner chassis,
power chassis, and 78 rpm phono turntable



149. Riders / 23 Volume Set
Perpetual Troubleshooters Manuals



150. EH Scott / 800b
1946/47; AM/FM/Shortwave; 2 pieces: Tuner chassis
and power chassis; mounted in a simple cabinet



151. Acoustics Research / AR11
1978; Speaker pair; woofer refoamed; no grill